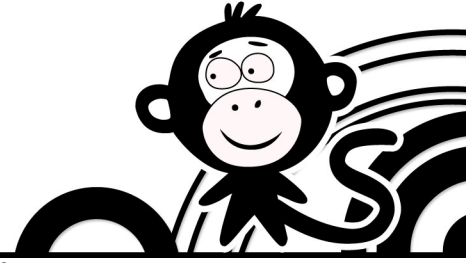




Welcome to Edmo in the Park!

Need to Knows (Page 1 of 3)



Summer is finally here!! Below is all the information you need to make the most out of your experience with Camp Edmo. Fix yourself a nice cup of tea, sit back and take a few minutes to read *carefully* and *calmly* before the first day of camp. We look forward to seeing you shortly!!

DROP OFF/PICK UP

Curbside Morning Drop Off MON-FRI (8:50-9am)

- 1) Drop off takes place at the delivery gate *in between* the baseball field and the playground when headed WEST on West Pacific Avenue (not at the main entrance to the playground).
- 2) **For your safety, please follow these directions:** Enter the Presidio through the Presidio Gate on Presidio Avenue only. Once inside the Presidio, make your first left onto West Pacific Avenue. Continue down West Pacific Avenue until you see the Camp Edmo staff on your right hand side. **DO NOT ENTER THE PRESIDIO THROUGH THE ARGUELLO GATE as drop off is on the opposite side of the street. You will blocking traffic and endanger your child if you stop on the wrong side of this narrow street.**
- 3) W Pacific Ave is narrow street with lots of traffic. Our curbside drop off will allow you to stay in your car, our staff to safely escort your child into camp and aid the flow of traffic.
- 4) Please leave the unloading zone promptly after your child exits the car, in order to keep the line moving.

Additional Notes:

- **Want to talk at length with a staff person or see the start of camp?** We'd love for you to come in! Please come early, find a legal parking space, and look for the sign in table and smiling staff faces!
- **If you arrive late (after 9:10 AM):** You must find a legal parking space to walk your child into school to sign in with the Camp Director.
- **If you have AM Extended Care (Starting at 8am):** Please follow the regular Morning Drop Off Procedures.

Curbside Afternoon Pick Up MON-THURS (3-3:10pm)

- 1) See #1 & #2 above
- 2) A staff member will open the car door and assist your child into the vehicle.
- 3) Of course you are also welcome to park your car legally in the neighborhood and come onto the campus to pick up your child.

Additional Notes:

- **Campers picked up after pick up hours:** If you are not enrolled in extended care, you will be charged the "a la carte" extended care rate of \$10/hour (hours are not prorated, any portion of an hour is considered a full hour). Payment is due at the time of pick up to the Camp Director. Late pick ups after 6pm are charged \$2/minute.
- **If you are picking up during pm extended care hours (Thursday 3:15-6pm or Friday 4:15-6pm),** you must park your car and enter the park. Extended Care activities will take place inside the Julius Kahn clubhouse or outside on the field/playground.

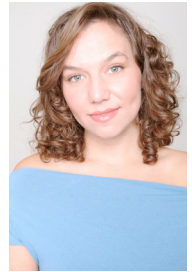
SAFETY

HEALTH HISTORY FORM (Phone Enrollments ONLY! If you enrolled online, you have already completed this form). If you enrolled by phone, you must still go to www.campedmo.org → My Edmo → Parent Log-In → Health & Emergency Form. Online form must be filled out 7 days before your first day of camp. *Campers without a completed Health Form on file will not be admitted to camp.*

AUTHORIZED PICK UP LIST: If you would like to add someone to your authorized pick up list, please do so online or let the staff member at check in on your first day know or call the Camp Director at the camp phone number listed above. Anyone not listed on your pick up list will not be able to leave the premises with your child until a parent/guardian is reached by the Camp Director by phone.

Camp Director

Sara Statler



Camp Contact Info

415.342.3229

campedmoSFNV@edventuremore.org

The contact info above is the ONLY number to reach the Camp Director on-site. Please do not call the school office as messages are not forwarded to our staff.

Camp Address

Julius Kahn Park
(off W. Pacific Ave in the Presidio)

Camp Hours

Regular

9am-3pm, M-F
Note: There is NO FAMILY FRIDAY for Edmo in the Park.

Extended Care

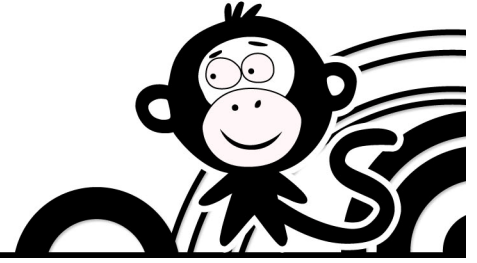
AM: 8-9am, \$30/wk
PM: 3-6pm, \$60/wk*
A la Carte: \$10/hr

**Late pick ups after 6pm are charged \$2/minute.*



Welcome to Edmo in the Park!

Need to Knows (Page 2 of 3)



LUNCH & "NUT-FREE" POLICY

Campers must bring lunch to camp every day. *There is NO KID CHOW option for Edmo in the Park.*

Please remember the following when packing lunch:

- 1) Include a morning snack and if you are doing extended care, an afternoon snack as well.
- 2) Bring a reusable water bottle, especially if your child is entering 2-4th grade and will be going on the weekly field trips.
- 3) **"NUT-FREE" CAMPS:** Unlike our morning rallies, all snack and lunch times are **"NUT-FREE"**. In order to ensure the safety of all our campers, all our camps sites are designated as "Nut-Free Campuses." Please **DO NOT BRING ANY NUT PRODUCTS** (trail mix, peanut butter, granola bars, etc.). We apologize for any inconvenience, but our policy ensures the safety of our campers with life-threatening allergies.

CLOTHING

- 1) **ORANGE BANDANAS:** Please wear your orange Edmo in the Park orange bandanas EVERY day to camp. We will be using these to identify kids in the park and on field trips.
- 2) **SMOCKS:** Some of our art and science projects can lead to the temporary or permanent staining of clothes. Please bring a smock (oversized t-shirt works well) if you are concerned about your child's clothes getting stained. Definitely don't wear your favorite threads to camp!
- 3) **CLOSED-TOED SHOES:** In order to reduce the risk of injury, please DO NOT wear flip flops or loose-fitting sandals to camp. Crocs or similarly styled shoes are acceptable as long as they are secure and easy to run in.
- 4) **LAYERS:** We *strongly* suggest dressing in layers. Mornings can sometimes be quite brisk and your child may have Recreation as their first station of the day.

OTHER SUGGESTED ITEMS TO BRING:

- Backpack (esp. entering 2-4th graders going on weekly field trips)
- Sunscreen
- Hat
- Smock or oversized t-shirt (esp. entering K-1st graders)
- Drinking Water
- Change of clothes (especially for younger ones—you know why!)

RECYCLED MATERIALS TO BRING FROM HOME

Sometimes campers may be asked to bring recycled materials from home to

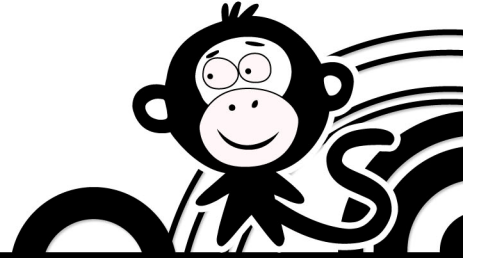


Like us on Facebook
and be the first to learn
about the
T-Shirt Challenge
of the Week!



Welcome to Edmo in the Park!

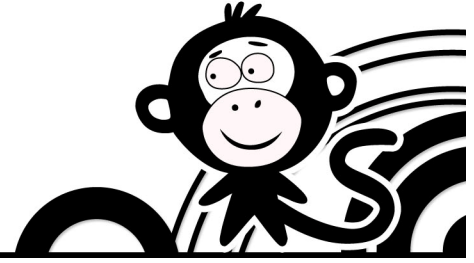
Need to Knows (Page 3 of 3)





Welcome to Edmo in the Park!

Need to Knows (Page 4 of 3)



GIVE ME MORE SHEETS

Every day campers bring home a “Give Me More” detailing what we did at camp that day, conversation starters, any upcoming events, reminders of what to bring, additional resources and other important information.

EDMO VIBE!

You see it. That insatiable curiosity. Those moments of beaming confidence. That generosity with classmates. Your child has The Edmo Vibe, and we want to support them on the journey! The Edmo Vibe Game will inspire life skills in your child through earning special cards, tracking their progress from Tree Monkey to Space Monkey on a magnetized map, and recognizing their growth every Family Friday. Get ready to rock The Edmo Vibe all summer long!



ONLINE PARENT SURVEYS

Look out for an e-mail with a Parent Survey link each week asking for your comments and feedback. Your feedback and comments are crucial in our efforts to secure grant funding and improve our service each year. Thank you for taking a few minutes to fill one out each week.

BEHAVIOR

1) CONSISTENT BEHAVIOR ISSUES: If consistent and documented behavioral issues arise that detract from the positive experience of, and/or cause physical harm to other campers and staff, we reserve the right to excuse the child from camp without refund.

2) TOYS: Please do not bring to camp any toys, games, or valuables from home unless expressly requested by us to use for a particular camp project (such as Toy Story Animation) or you really want it to come home broken.

If there's anything we can do to make your child's camp experience more enjoyable, please contact your Camp Director. Communication is the key to a fantastic summer camp experience!

**HAVE ANY QUESTIONS
ABOUT ANY OF THE ABOVE
INFORMATION?**

E-MAIL:
info@edventuremore.org

**or
CALL OUR
HOME OFFICE:
415.282.MORE(6673)**

**THANK YOU AND WE LOOK FORWARD TO ANOTHER
MEMORABLE SUMMER WITH YOU!**