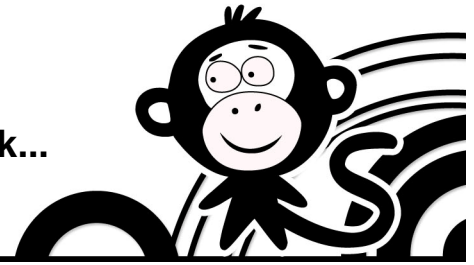




# Welcome to Edmo!

A few things to keep in mind this week...



## DROP OFF/PICK UP

### Curbside Morning Drop Off MON-FRI (8:50-9am)

- Drop off will take place at the back of the school on Corbett Ave
- Take Market Street to Clayton Street. From Clayton Street make a left onto Corbett Ave. That way, you can safely let your child out from the passenger side of the car.
- The Camp Edmo unloading zone will be on the Corbett Ave at Dixie Street. Look for our camp sign, staff t-shirts, and smiling faces to greet your camper(s).
- Please stay in your car if possible so traffic moves smoother.
- Your child will be met by an Camp Edmo staffer who will see her/him into the campus.
- Please leave the unloading zone promptly after your child exits the car, in order to keep the line moving.

#### Additional Notes:

- **Want to talk at length with a staff person or see the start of camp?** We'd love for you to come in! Please come early, find a legal parking space, and look for the sign in table and smiling staff faces!
- **If you arrive late (after 9:10 AM):** You must find a legal parking space to walk your child into school to sign in with the Camp Director.
- **If you have AM Extended Care (Starting at 8am):** Please follow the regular Morning Drop Off Procedures.

### Curbside Afternoon Pick Up MON-THURS (3-3:10pm)

- See #1 & #2 above
- A staff member will open the car door and assist your child into the vehicle.
- Of course you are also welcome to park your car legally in the neighborhood and come onto the campus to pick up your child.

#### Additional Notes:

- **Campers picked up after pick up hours:** If you are not enrolled in extended care, you will be charged the "a la carte" extended care rate of \$10/hour (hours are not prorated, any portion of an hour is considered a full hour). Payment is due at the time of pick up to the Camp Director. Late pick ups after 6pm are charged \$2/minute.
- **If you are picking up during pm extended care hours (Thursday 3:15-6pm or Friday 4:15-6pm),** you must park your car and enter the building. Ask the Camp Director which is the designated extended care room on Monday morning.

### Curbside Afternoon Pick Up FRIDAY (4-4:10pm)

Be sure to join us for Family Fridays from 3-4pm! This is a great chance to get to know those special people you've heard about all week. Family Friday includes camper recognition, project galleries, movie screenings, kids vs. staff games, rallies and more! We hope you'll park, walk in and join in on the fun. Regular pick up on Fridays is 4pm. If you are unable to join us, your child will still participate with counselor guidance. We can't wait to celebrate your child's successes with you at Family Fridays!

## CLOSED-TOED SHOES

Don't forget to have your child wear tennis shoes or secure, closed-toed sandals to camp to reduce the risk of injury to your camper's toes (a.k.a "piggies"). Please don't let them wear loose sandals or flip flops as there are times in the day when the kids run around quite a bit, especially in Recreation!

## NUT-FREE ZONE

Ours is a "Nut-Free" camp. Please make sure that any snacks you send with your kids do not contain nut products of any kind (especially granola bars or trail mixes).

## T-SHIRT CHALLENGE

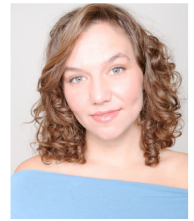
Earn a Plus Card in our Edmo Vibe Game by completing the Edmo T-Shirt Challenge of the Week. Check Facebook for the weekly challenges!

## KID CHOW LUNCH & PM EXTENDED CARE

Kid Chow does not provide a snack or drink. Please be sure to pack snacks and drinks for camp. Please consider bringing a reusable water bottle or purchasing one of our stylish steel water bottles. If you are enrolled in PM extended care (3-6pm), we strongly recommend bringing an additional snack from home to quell those afternoon munchies! Remember—NO NUTS!

**Noe Valley/  
Twin Peaks  
Camp Director**

**Sara Statler**



**Camp Contact Info**  
**415.342.3229**  
**campedmoSFNV@**  
**edventuremore.org**

*The contact info above is the ONLY number to reach the Camp Director on-site. Please do not call the school office as messages are not forwarded to our staff.*

**Camp Address**  
**Rooftop Alt.,**  
**Burnett Campus**  
**770 Corbett**  
**San Francisco, CA**

**Camp Hours**  
**Regular**  
Mon-Thurs, 9am-3pm  
Fri. 9am-4pm

**Extended Care**  
AM: 8-9am, \$30/wk  
PM: 3-6pm, \$60/wk\*  
A la Carte: \$10/hr  
**\*Late pick ups after 6pm are charged \$2/minute.**

**\*\*\*CAMP IS CLOSED  
MONDAY, JULY 4<sup>TH</sup>\*\*\***

